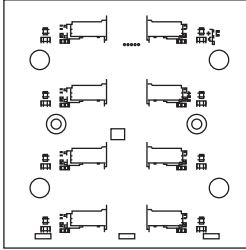




# Quick Start Guide

## Eclipse Push - Button Switch



R-ECS-86-KNX-ThCO2

### Package Contents

- Core Eclipse Push-Button Switch
- Electronic Part Cover
- Metal Mounting Support
- Screws
- Connectors

### Core Bina Otomasyon Sistemleri Ltd. Şti.

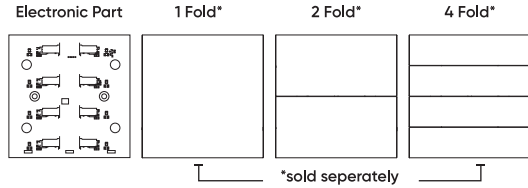
Fatih Mahallesi Ege Caddesi No:42/5  
Gaziemir - Izmir - Türkiye

www.core.com.tr

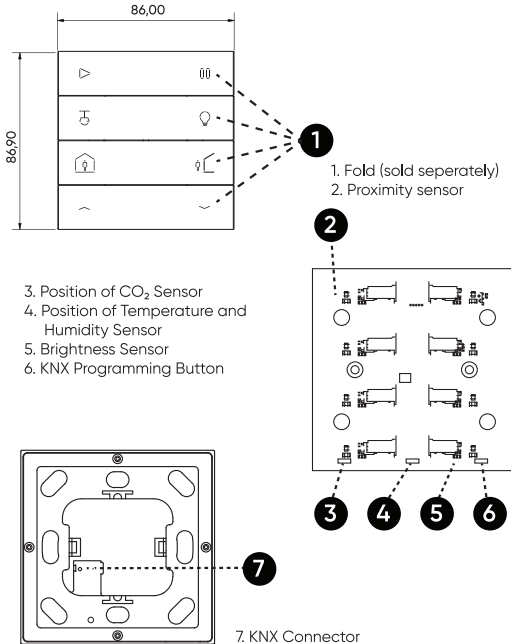


CONCEPT	DESCRIPTION
<b>Sensors:</b>	Temperature & Humidity CO <sub>2</sub> Proximity & Light
<b>Led Colors:</b>	White, red, green, blue, yellow, magenta, cyan
<b>Dimensions:</b>	86mm X 86mm X 11mm
<b>Fold Material:</b>	Aluminium, Brass and Stainless Steel depending on the finish selection
<b>Power:</b>	29 VDC – 0,35 Watts from KNX Bus-line
<b>Consumption:</b>	< 12 mA from KNX Bus-line
<b>Connectivity:</b>	KNX-TP
<b>Installation:</b>	German IEC/EN 60670 In wall Box

### To be completed



## Dimensional Drawing

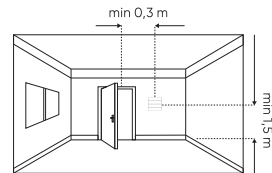


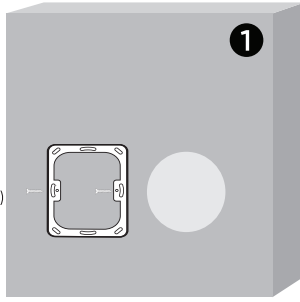
## Safety Remarks



### Warnings

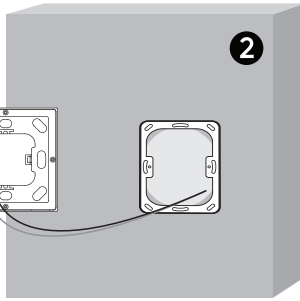
- Installation, electrical connection, configuration and commissioning of the device can only be carried out by qualified personnel in compliance with the applicable technical standards and laws of the respective countries.
- The electrical connection of the device can only be carried out by qualified personnel. The incorrect installation may result in electric shock or fire. Before making the electrical connections, make sure the power supply has been turned off.
- Do not connect the main voltage (230V AC) to KNX connector of the device.
- Opening the housing of the device causes the immediate end of warranty period.
- In case of tampering, the compliance with the essential requirements of the applicable directives, for which the device has been certified, is no longer guaranteed.
- To clean folds, use a dry cloth. It must be avoided the use of solvents or other aggressive substances
- Contact with fluids to the plate and socket is to be avoided.
- The device can not be installed close to the heat sources such as radiators or house hold appliances or in position subjected to direct sunlight.
- The device has to be installed preferably on an internal wall at the height of 1,5m and at least 0,3m far from doors.



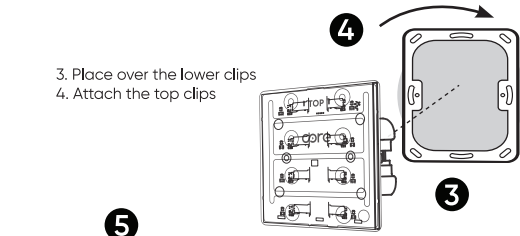
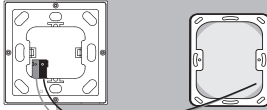


1. Mount the metal mounting support. (Included in the box.)

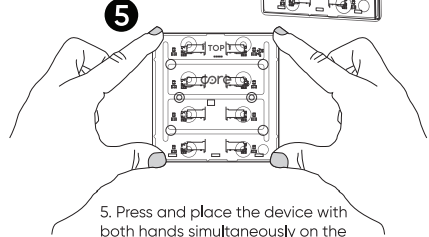
- ⚠ Use screws included in the box (M3x15 mm)
- ⚠ Do not overtighten the screw



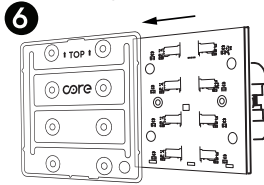
2. Connect KNX cable to the device. Check that polarity is correct.



3. Place over the lower clips  
4. Attach the top clips

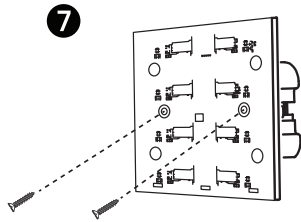
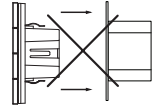


5. Press and place the device with both hands simultaneously on the right and left sides

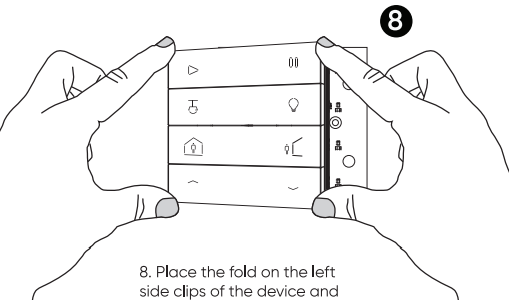


6. Remove the electronic part cover

- ⚠ Do not throw away the screws
- ⚠ Pushing the device straight into the clips might damage



7. Mount the screws on the body



8. Place the fold on the left side clips of the device and push on the right side

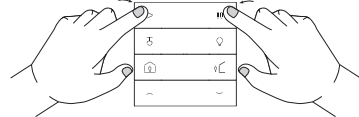
- ⚠ Folds sold separately

• Configuration and commissioning of the device require the use of the ETS4 or later releases. These activities must be carried out according to the design of the building automation system done by a qualified planner.

• For the configuration of the device parameters the corresponding application program or the whole Core product database must be loaded in the ETS program. For detailed information on configuration options, refer to the application manual of the device available on the website [www.core.com.tr](http://www.core.com.tr)

• For commissioning the device the following activities are required

- make the electrical connections as described above,
- turn on the bus power supply,
- switch the device operation to the programming mode
- alternatively, instead of using programming button, it's possible to switch the operation of the device to programming mode by pressing button 1 and button 2 simultaneously for 5 seconds.



- download into the device the physical address and the configuration with the ETS program.

• At the end of the download the operation of the device returns to normal mode

• Now the bus device is programmed and ready to use

Core Bina Otomasyon Sistemleri Ltd. Şti.

Fatih Mahallesi Ege Caddesi No:42/5  
Gaziemir - İzmir - Türkiye

Installation Programming Manual

