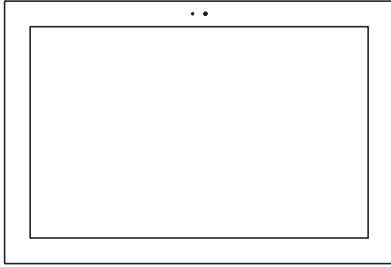




Quick Start Guide

Surface 1.1 10" Touch Panel



CR-SFP-10-KNX-XXX

Package Contents

- Core Surface 1.1 10" Touch Panel
- Screws
- Mounting Magnets
- Connectors

Core Bina Otomasyon Sistemleri Ltd. Şti.

Fatih Mahallesi Ege Caddesi No:42/5
Gaziemir - Izmir - Türkiye

www.core.com.tr



CONCEPT	DESCRIPTION
CPU:	Quad Core ARM Cortex - A35 CPU @1.3GHz / Rockchip PX30 Chipset
Memory:	2GB
Hard Disk:	8GB EMMC
Operating System:	Android 8.1
Power:	12-30VDC
Screen size:	10.1"
Resolution:	1280px X 800px
Microphone:	1 with Echo Cancellation
Speaker:	2 x 8 Ohm - 2 Watts
Input:	5 Digital Inputs
Output:	4 x 8A Latching Relay
KNX Bus Connection:	KNX-TP
RS-485:	1
RS-232:	1
LAN:	2
Wi-Fi:	No
Dual Network Connectivity:	Yes
Sensors:	Temperature, Humidity, Proximity, Ambient Light
Operating System:	CoreOS 4.0
Thermostat Logic:	Yes
Installation:	Flush-mounting with Surface Inwall Box

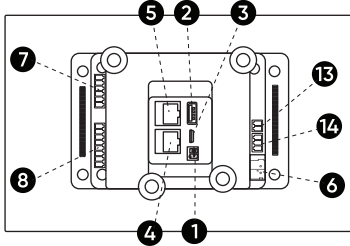
Components



Safety Remarks

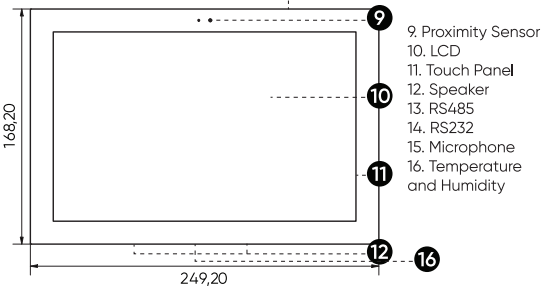


Rear View



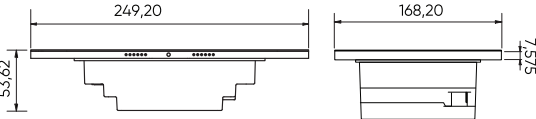
1. 12-30VDC
2. USB
3. OTG
4. ETH0
5. ETH1
6. KNX
7. I1,I2,I3,I4,I5,COM
8. Q1,Q2,Q3,Q4

Front View



9. Proximity Sensor
10. LCD
11. Touch Panel
12. Speaker
13. RS485
14. RS232
15. Microphone
16. Temperature and Humidity

Side View



Warnings

• Installation, electrical connection, configuration and commissioning of the device can only be carried out by qualified personnel in compliance with the applicable technical standards and laws of the respective countries.

• The electrical connection of the device can only be carried out by qualified personnel. The incorrect installation may result in electric shock or fire. Before making the electrical connections, make sure the power supply has been turned off.

• Do not connect the main voltage (230V AC) to VDC input, digital input and KNX connector of the device.

• Opening the housing of the device causes the immediate end of warranty period.

• In case of tampering, the compliance with the essential requirements of the applicable

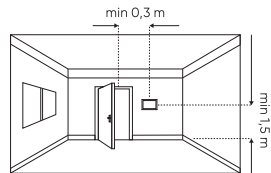
directives, for which the device has been certified, is no longer guaranteed.

• To clean use a dry cloth. It must be avoided the use of solvents or other aggressive substances.

• Contact with fluids to the plate and socket is to be avoided.

• The device has to be installed preferably on an internal wall at the height of 1,5m and at least 0,3m far from doors.

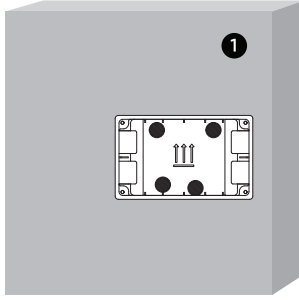
• The device can not be installed close to the heat sources such as radiators or house hold appliances or in position subjected to direct sunlight.



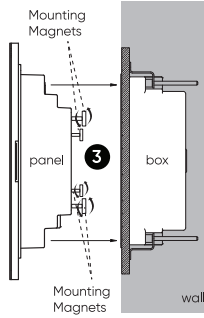
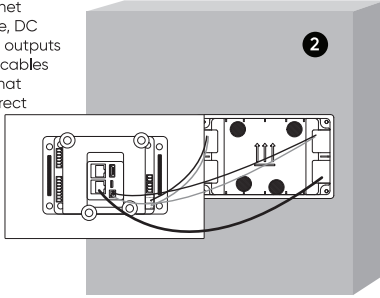
1. Mount the inwall Box

 Inwall box sold separately

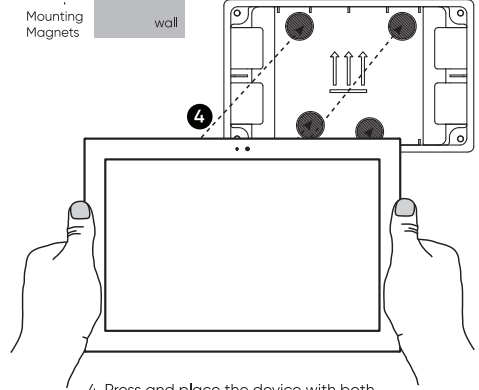
Inwall box dimensions:
103mm x 173mm x 67mm



2. Connect ethernet cables, KNX cable, DC power cable and outputs and digital input cables (if used). Check that polarities are correct



3. Adjust the magnets for perfect fit



4. Press and place the device with both hands simultaneously on the right and left side.

- Surface 1.1 10" Touch Panel is configured via built-in web interface. Ethernet network interface is set to DHCP mode by default.
- Connect Surface 1.1 10" Touch Panel to a network that has DHCP server via home or building network.
- Go to settings in Surface 1.1 10" Touch Panel user interface and then get IP address of Touch Panel. If there is no DHCP server on network, set IP address of Touch Panel manually. For this check programming manual.
- Enter IP address to web-browser, then enter username and password

Default username: webAdmin
Default password: wa1234

- For support in further steps, check Programming Manual.

Core Bina Otomasyon Sistemleri Ltd. Şti.
Fatih Mahallesi Ege Caddesi No:42/5
Gaziemir - İzmir - Türkiye

User Manual
Programming Manual

